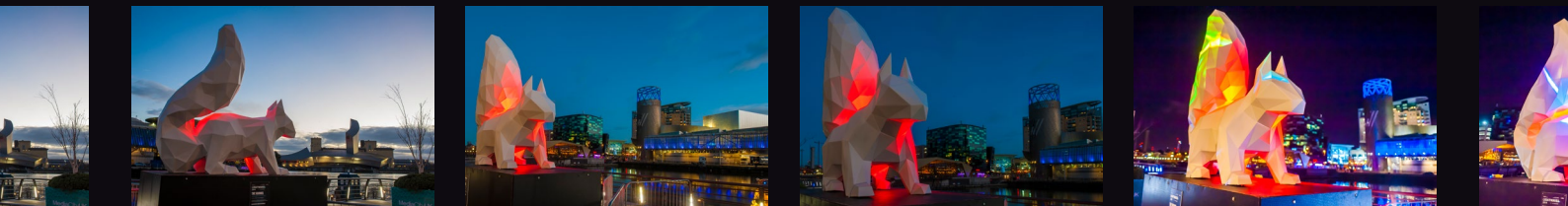




QUAYS CULTURE PRESENTS

THE SQUIRREL





A MESMERIC VISUAL DISPLAY

Sedentary during the day, **The Squirrel** will come to life as the sun sets through the use of projection mapping technology, creating a mesmeric visual display.



BLURRING THE BOUNDARIES BETWEEN NATURE AND THE MAN-MADE

The Squirrel incorporates projected images that illuminates in the evening darkness. It can be presented outdoors and indoors. The squirrel stands at 2.3m height and when on plinth 3.7m with a length of 2.25m. It is assessible to people of all ages and abilities and this large sculpture receives a fantastic reception, with visitors.



HIRE FEE

We aim to create bespoke packages to fit with your needs. **The fee is from £5000** inclusive of all costs excluding travel and freight of artwork and insurance. It includes The Squirrel sculpture, Macbook with projection mapping software LED Batten to illuminate the dark side of The Squirrel. Technical Instructions for operating the projection artwork.

TECHNICAL RIDER

FOOTPRINT OF SQUIRREL

- Height: 2.3m
- Length: 2.25m
- Width: 0.7m
- Weight +/-50kg

Recommended measurements of Plinth
(Not provided)

- Platform: 2.4m x 1.2m
- Height: 1.5m (height is flexible)

SITE:

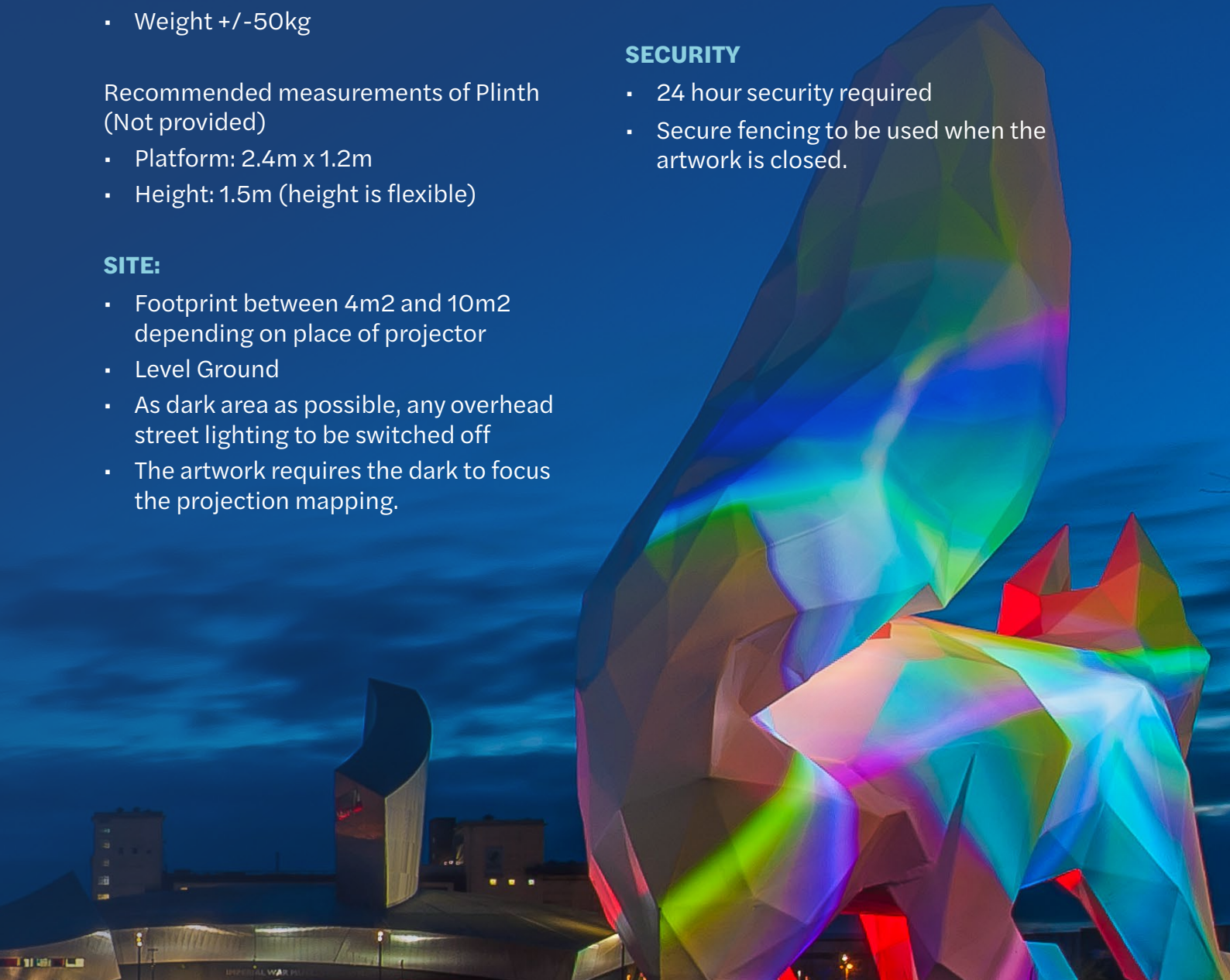
- Footprint between 4m² and 10m² depending on place of projector
- Level Ground
- As dark area as possible, any overhead street lighting to be switched off
- The artwork requires the dark to focus the projection mapping.

POWER REQUIREMENTS:

- Required for projector & Macbook
- 16amp power required for LED Batten, if outside.

SECURITY

- 24 hour security required
- Secure fencing to be used when the artwork is closed.



TECHNICAL RIDER (CONTINUED)

TRANSPORT:

- You are responsible for transport for collection and delivery back to us from our store facility.
- The artwork is transported on a pallet
- We recommend a low-loader vehicle 2.32m high. The vehicle needs the height for the squirrel to fit inside it. The door is always lower so the low loader gives the ability to lift The Squirrel into the vehicle. Alternatively, you can use an arctic lorry, it is not possible to use a flat bed.
- We can arrange delivery for an additional cost

Other Equipment to Transport

- Macbook
- LED Batten (that fits under The Squirrel)

YOU TO PROVIDE

- Plinth with wooden top (could be provided at additional cost).
- The Squirrel needs to be bolted through the wooden surface on the plinth into The Squirrel's feet. If showing the work outside the plinth must be weighted with a 1000kg ballast.
- Empty IBC with straps for ballast
- Projector – Ideally 16000 lumens, AC 230v, 2060 watt.
- If the projector you are using is not located inside a building, then a projection tower is required.
- Our laptop must be in 100% weatherproof conditions
- The Artwork needs to be insured to the replacement value of £20,000. You are solely responsible for the artwork from the point of collection handling and until the return delivery has been signed back into our custody by one of our staff.
- Audio visual (AV) projector technician to line up the images on the provided laptop (pre-installed) with the sculpture.





QUAYS CULTURE

Quays Culture is the artistic team behind the large-scale art events at Salford Quays and MediaCity. Our artistic programme **immerses audiences** into new and exciting public realm exhibitions that are inspired by its surroundings, with a focus on technology, creativity and digital innovation.

We present a **free public programme** and from our commissioning we have established a number of touring artworks. Quays Culture's work ranges from the intimate to the monumental, inspiring audiences to engage with the location in new and exciting ways.

Photography by Joel Chester Fildes and Jason Lawton

